

KUKDONG Electronic Precision Co., Ltd.



IN2CONNECT
ELECTRONIC CONNECTORS

MIL-DTL-26482 SERIES I CONNECTOR



www.kdep.co.kr

MIL-DTL-26482 Ser. I Connectors
Uses a quick disconnect bayonet
Coupling and 5 keyways



In2Connect UK Ltd

Unit L, Tyson Courtyard

Weldon South Industrial Estate

Corby

Northants

NN18 8AZ

Tel: 01962 773004

sales@in2connect.uk.com



KUKDONG

극동전자정밀주식회사

KUKDONG Electronic Precision Co., Ltd.

MIL-DTL-26482 Series I

Contents	2
Features	2
Technical Data	3
Mounting Dimensions	5
Shell style	6
How to order	7
Contact Arrangements	8
Connector Dimensions	15
Termination Assembly	15
Accessories	22
Cross Reference Lists	23

MIL-DTL-26482 Series I

Contents

Introduction

The KD MIL-DTL-26482 SERIES I Connectors offers high density contact arrangements in a miniature circular metal shell.

This series conforms to MIL-DTL-26482 and are intermateable, intermountable and interchangeable with all MIL-DTL-26482 Connectors.

This series uses a quick disconnect bayonet coupling and 5 keyways for rapid positive mating and unmating of the connector.

Applications

Military and industrial environments requiring a miniature, high density, environmental connector.

- Power generators
- Engines
- Sensors
- Motion Control
- Off-road vehicles
- Earth moving equipment
- Ships
- Mobile equipment
- Industrial machinery
- Telecommunications

Features

Rugged Shell

Aluminum alloy shell and hardware create a rugged connector with minimal weight.

These connectors have been used extensively in commercial, military and aerospace environments. Standard shells accept all MIL-DTL-26482 accessories.

Environmentally Sealed

Complete moisture sealing is achieved by combining four seals: shell, peripheral, interfacial and wire. Wire Seal is accomplished by multiple ripple design, exceeding the wire sealing requirements of MIL-DTL-26482.

Resistant to Military Environments

These connectors will operate in temperatures -55°C to $+125^{\circ}\text{C}$ (-67°F to $+257^{\circ}\text{F}$) under the harshest possible conditions.

Wide Range of Wire Gauges and Current Carrying Capability

Up to 22 amps with wire gauges from size 24 up to size 16 AWG wire.

Resilient Insulator & Grommet

A resilient synthetic rubber insulator and integrated rear wire sealing grommet guarantees a liquid tight assembly.

Solder contacts are permanently bonded into the insulator.

MIL-DTL-26482 Series I

Technical Data

Electrical Data

Contact rating at +20°C

Contact size AWG	Current max. A
20	7.5
16	22
12	35

Insulation resistance

The insulation resistance to be tested per EIA364.21 and MIL-DTL-26482 3.6.6 test condition B; DC500V/5000MΩmin

Operating & Test voltage

The dielectric withstanding voltage to be tested per EIA364.20 and MIL-DTL-26482 3.6.8

Service rating	Operating voltage	
	DC	AC(rms)
I	850V	600V
II	1,275V	1,000V

Service rating	Test voltage AC(rms)		
	Sea level	50,000 ft	70,000 ft
I	1,500V	500V	375V
II	2,300V	750V	500V

Contact resistance

Voltage drops to be tested per EIA364.06 and MIL-DTL-26482 3.6.4

Contact size AWG	Test current A	millivolt max. mV
20	7.5	55
16	13	50
12	23	50

Mechanical Features

Ambient temperature

-55°C/+125°C

Water pressure

48hours in 6feet per MIL-DTL-26482 3.6.14

Humidity

20-day 50 to 90% humidity testing per MIL-DTL-26482 3.6.25

Mating cycles

500cycle.

Salt spray

Unmated connectors and protective covers meet 48hour exposure per EIA364.26 and MIL-DTL-26482 3.6.19

Vibration

10 μ s max at 10 to 2,000Hz(15g) discontinuity per EIA364.28 and MIL-DTL-26482 3.6.21

Shock

50g's/11ms duration, three major axes 10 μ s max discontinuity per EIA364.27 and MIL-DTL-26482 3.6.23

Contact retention

The contact retention to be tested per EIA364.29 and MIL-DTL-26482 3.6.32

Contact size AWG	Test force N (LB)
20	66.7 (15)
16	111.2 (25)
12	111.2 (25)

MIL-DTL-26482 Series I

Wire sealing range

Contact size	Wire size AWG	Insulation O.D limits	
		min. mm	max. mm
20	24, 22 & 20	1.19	2.11
16	20, 18 & 16	1.68	2.77
12	14, 12	2.46	3.61

Insulation strip lengths

Contact size	Wire size AWG	Strip length mm
20	20 - 24	9.5
16	16 - 20	6.4

Materials

Shell

Material	Aluminum alloy
Finish	Olive drab chromate coating over cadmium plating
alternative finish	Black over zinc plating (RoHS)

Insulator and grommets

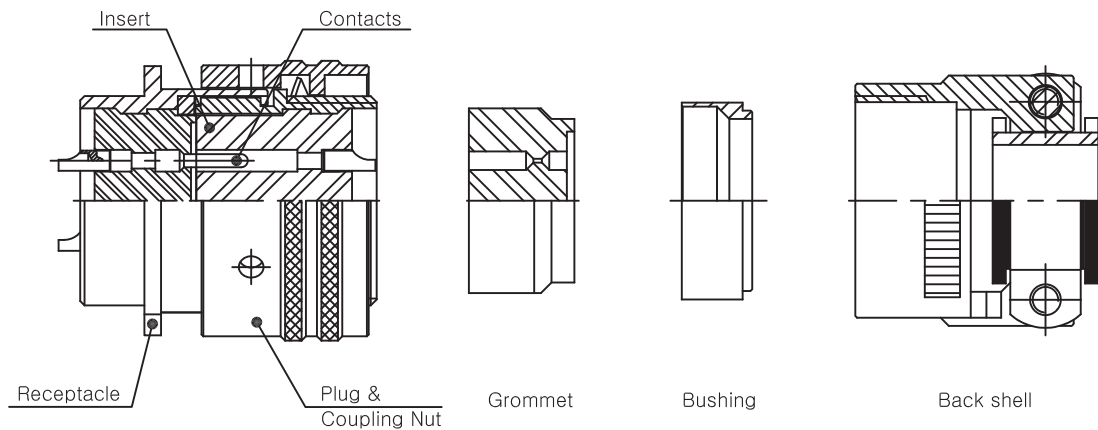
Material	Synthetic rubber
----------	------------------

Contacts

Material	Copper alloy
Finish	Gold plate

Cross Sections

The diagram shows a typical cross-section of a mated pair of connectors.

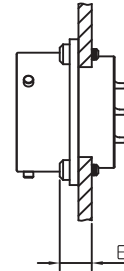
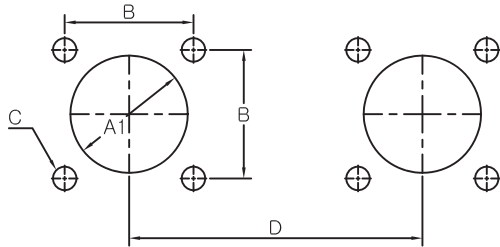


MIL-DTL-26482 Series I

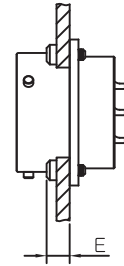
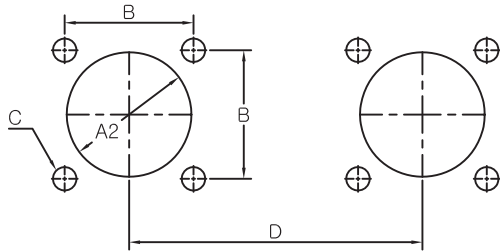
Mounting Dimensions

Mounting holes

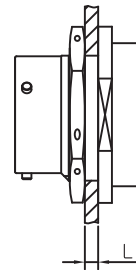
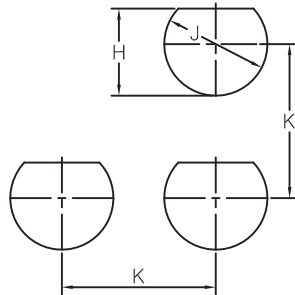
Front Mount



Rear Mount



Jam Nut Mount

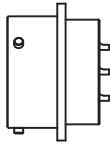


Shell Size	∅A1 -0.25	∅A2 -0.25	B ±0.15	C +0.10	D min	E max	H -0.2	J +0.2	K min	L	
										min	max
8	11.63	14.73	15.09	3.10	21.4	2.21	13.7	14.5	24.6	1.57	3.18
10	14.81	17.78	18.26	3.10	24.6	2.21	16.9	17.7	27.8	1.57	3.18
12	17.98	21.82	20.62	3.10	27.0	2.21	21.0	22.5	32.6	1.57	3.18
14	21.16	24.97	23.01	3.10	29.4	2.21	24.2	25.7	35.7	1.57	3.18
16	24.33	28.14	24.61	3.10	31.7	2.21	27.3	28.8	38.9	1.57	3.18
18	27.51	31.32	26.97	3.10	34.1	2.21	30.5	32.0	42.1	1.57	3.18
20	30.68	34.52	29.36	3.10	37.3	5.38	33.7	35.2	46.8	1.57	6.35
22	33.86	37.92	31.75	3.10	40.5	5.38	36.9	38.4	50.0	1.57	6.35
24	37.03	41.00	34.93	3.80	43.6	5.38	40.0	41.5	53.2	1.57	6.35

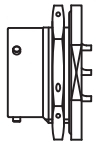
MIL-DTL-26482 Series I

Shell style

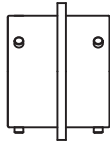
Plug or Receptacle



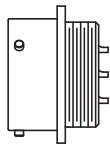
Box Mount
KD3112



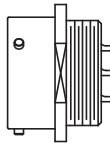
Jam Nut
KD3114A



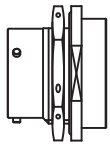
Thru-Bulkhead
KD3119



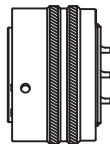
Wall Mount
KD3110



Cable Plug
KD3111

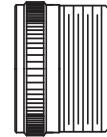


Jam Nut
KD3114



Cable Plug
KD3116

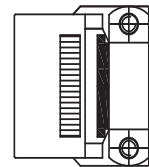
Choose Endbell



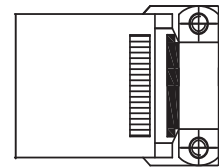
A
General Duty, Threaded



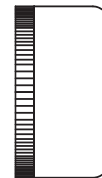
E
Environmental without Clamp



F
Environmental with Clamp



J
Environmental with Clamp and
Cable Jacket Gland Seal
(for KD3116 only)



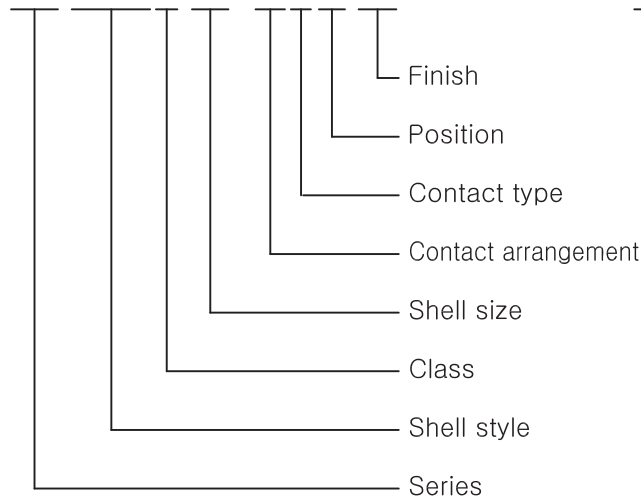
P
Environmental Potting

MIL-DTL-26482 Series I

How to order

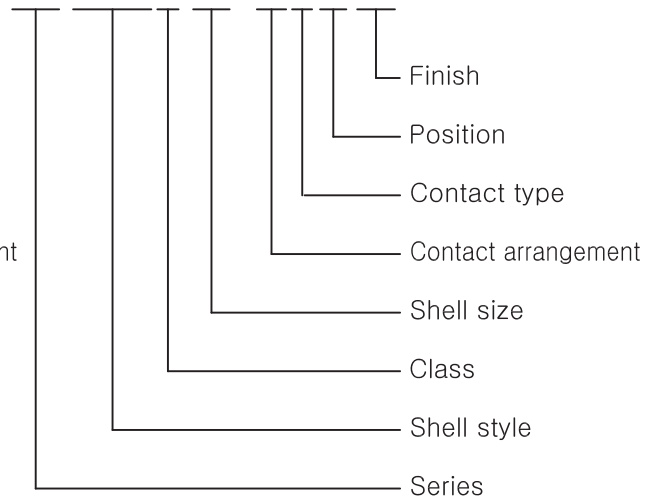
KD Order Reference

KD 3112E 12-10PW **



MS Order Reference

MS 3112E 12-10PW **



Series

- KD Kukdong circular connectors with bayonet coupling
- MS Military Standard

Shell style

- 3110 Wall mounting receptacle
- 3111 Cable connecting plug
- 3112 Box mounting receptacle
- 3114 Jam Nut mounting receptacle
- 3115 Dummy receptacle
- 3116 Straight plug
- 3119 Thru-bulkhead receptacle

Class

- A General duty, threaded back shell
- E Grommet seal except on KD3112
- F Grommet seal with strain relief
- J Cable seal with clamp (KD3116 only)
- P Potting seal

Shell size

- 8, 10, 12, 14, 16, 18, 20, 22, 24

Contact arrangement

See page 8~13

Contact type

- P – Pin contact
- S – Socket contact
- C – Feedthrough contact (only for KD3119)

Position

See page 8~9

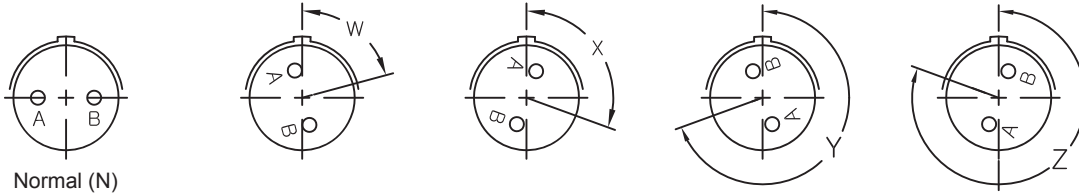
Finish

- No Code Olive drab cadmium plate finish as standard
- R Electroless nickel plating
- Z21 Black over Zinc plating (RoHS)
- A2 Black over Anodize
- N Nickel plating

MIL-DTL-26482 Series I

Contact Arrangements Alternate Insert Positions

※ View shows pin front side or socket rear side

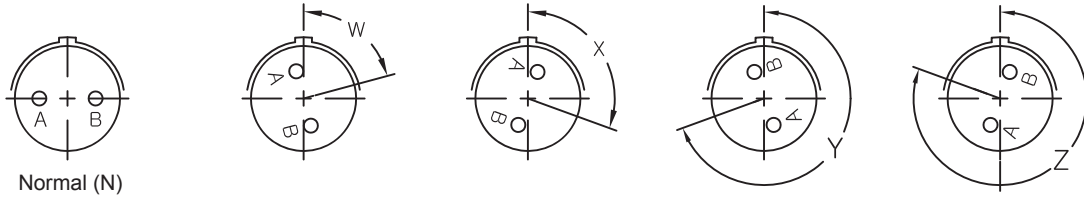


Shell Size	Insert Number	Contacts					Alternate pos.				Service rating
		Tot	20	16	12	8	W	X	Y	Z	
8	8-2	2	2				58	122			I
	8-3	3	3				60	210			I
	8-4	4	4				45				I
	8-33	3	3				90				I
	8-98	3	3				60				I
10	10-5	5	5				45	151	180	270	I
	10-6	6	6				90				I
	10-7	7	7								I
	10-98	6	6				90	180	240	270	I
12	12-3	3		3					180		II
	12-4	4		4			38				I
	12-8	8	8				90	112	203	292	I
	12-10	10	10				60	155	270	295	I
	12-12	12	12								I
	12-14	14	14								I
14	14-4	4			4		45				I
	14-5	5		5			40	92	184	273	II
	14-9	9	5		4		15	90	180	240	I
	14-12	12	8	4			43	90			I
	14-15	15	14	1			17	110	155	234	I
	14-18	18	18				15	90	180	270	I
	14-19	19	19				30	165	315		I
16	16-8	8		8			54	152	180	331	II
	16-14	14	8		6		25	78	180	240	I
	16-23	23	22	1			158	270			I
	16-26	26	26				60		275	338	I
	16-99	23	21	2			66	156	223	340	I

MIL-DTL-26482 Series I

Contact Arrangements Alternate Insert Positions

※ View shows pin front side or socket rear side



Shell Size	Insert Number	Contacts					Alternate pos.				Service rating
		Tot	20	16	12	8	W	X	Y	Z	
18	18-5	5			5		55	97	263	315	I
	18-8	8			8		180				I
	18-11	11		11			62	119	241	340	II
	18-28	28	26	2			49	158	207	329	I
	18-30	30	29	1			180	193	285	350	I
	18-32	32	32				85	138	222	265	I
	18-85	13	5		8		45	90	180	240	I
20	20-16	16		16			238	318	333	347	II
	20-24	24	24				70	145	215	290	I
	20-27	27	27				72	144	216	288	I
	20-39	39	37	2			63	144	252	333	I
	20-41	41	41				45	126	225		I
	20-90	15	3		12		18	60	240	270	I
	22	22-12	12			12					
22-19		19			19		15	90	225	308	I
22-21		21		21			16	135	175	349	II
22-32		32	32				72	145	215	288	I
22-34		34	34				62	142	218	298	I
22-41		41	27	14			39	135	264		I
22-55		55	55				30	142	226	314	I
22-95		32	26		6		26	180	266		I
24	24-19	19			19		30	165	315		I
	24-27	27	11		16		45	110	140	225	I
	24-31	31		31			90	225	255		I
	24-61	61	61				90	180	270	324	I

MIL-DTL-26482 Series I

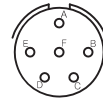
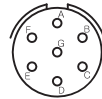
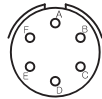
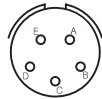
Contact Arrangements

Shell Size 8



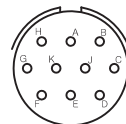
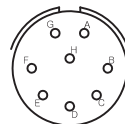
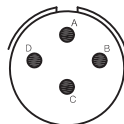
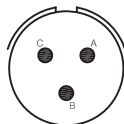
Insert number	8-2	8-3	8-4	8-33
No. of contacts	2	3	4	3
Contact size	20	20	20	20
Service rating	I	I	I	I

Shell Size 10

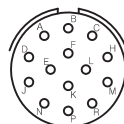
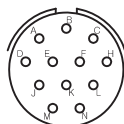


Insert number	10-5	10-6	10-7	10-98
No. of contacts	5	6	7	6
Contact size	20	20	20	20
Service rating	I	I	I	I

Shell Size 12



Insert number	12-3	12-4	12-8	12-10
No. of contacts	3	4	8	10
Contact size	16	16	20	20
Service rating	II	I	I	I



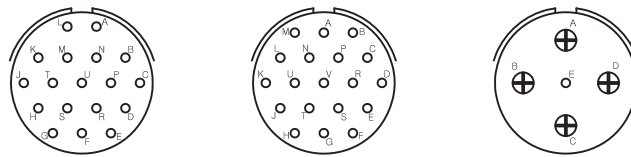
Insert number	12-12	12-14
No. of contacts	12	14
Contact size	20	20
Service rating	I	I

MIL-DTL-26482 Series I

Shell Size 14

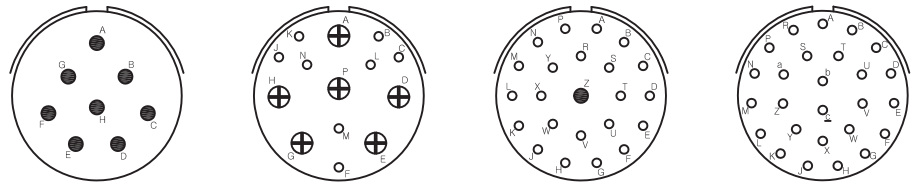


Insert number	14-4	14-5	14-12	14-15
No. of contacts	4	5	12	15
Contact size	12	16	8-20, 4-16	14-20, 1-16
Service rating	I	II	I	I



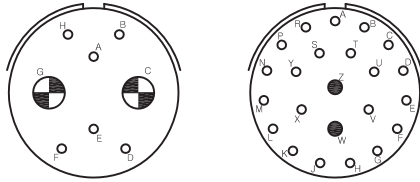
Insert number	14-18	14-19	14-22
No. of contacts	18	19	5
Contact size	20	20	1-20, 4-12
Service rating	I	I	I

Shell Size 16



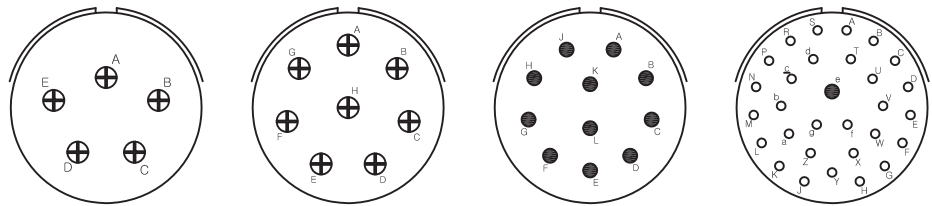
Insert number	16-8	16-14	16-23	16-26
No. of contacts	8	14	23	26
Contact size	16	8-20, 6-12	22-20, 1-16	16
Service rating	II	II	I	I

MIL-DTL-26482 Series I

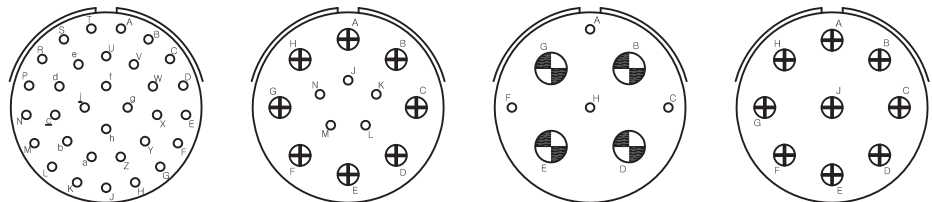


Insert number	16-95	16-99
No. of contacts	8	23
Contact size	2-8, 6-20	21-20, 2-16
Service rating	II	I

Shell Size 18



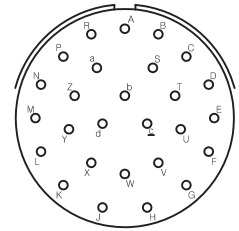
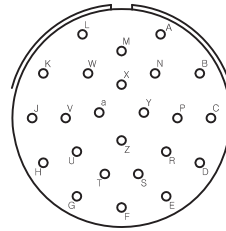
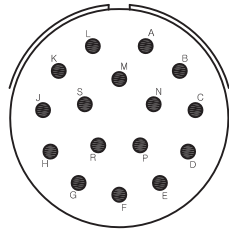
Insert number	18-5	18-8	18-11	18-30
No. of contacts	5	8	11	30
Contact size	12	12	16	29-20, 1-16
Service rating	I	I	II	I



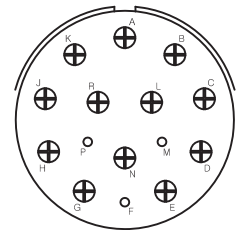
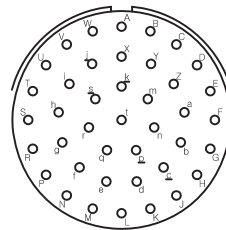
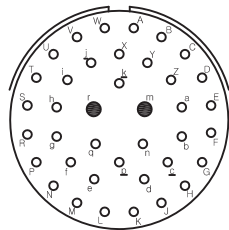
Insert number	18-32	18-85	18-88	18-96
No. of contacts	32	13	8	9
Contact size	20	5-20, 8-12	4-20, 4-8	12
Service rating	I	I	I	I

MIL-DTL-26482 Series I

Shell Size 20

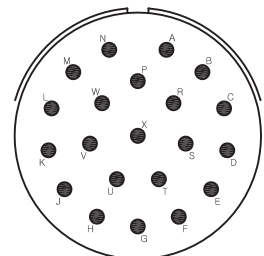
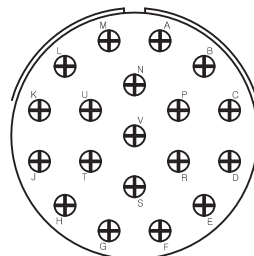
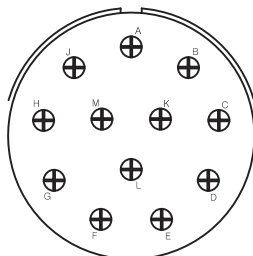


Insert number	20-16	20-24	20-27
No. of contacts	16	20	27
Contact size	16	24	20
Service rating	II	I	I



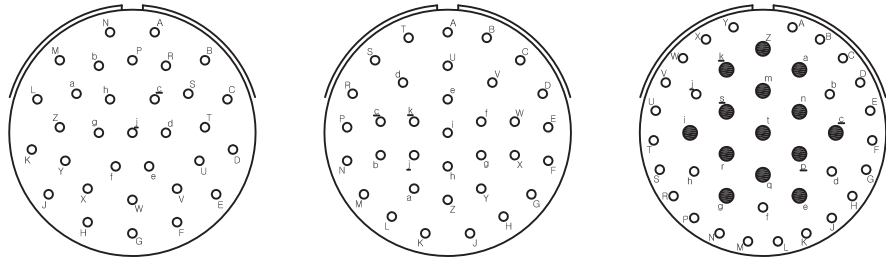
Insert number	20-39	20-41	20-90
No. of contacts	39	41	15
Contact size	37-20, 2-16	20	3-20, 12-12
Service rating	I	I	I

Shell Size 22

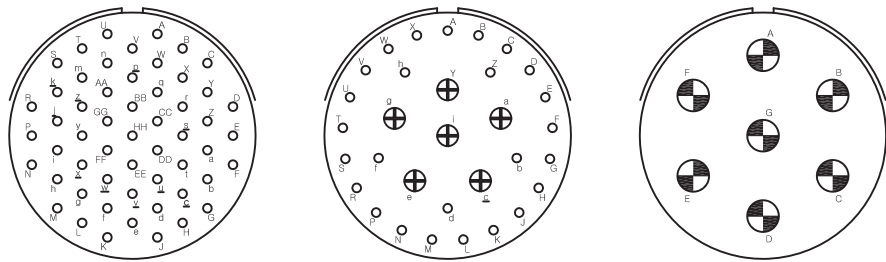


Insert number	22-12	22-19	22-21
No. of contacts	12	19	21
Contact size	12	12	16
Service rating	I	I	II

MIL-DTL-26482 Series I

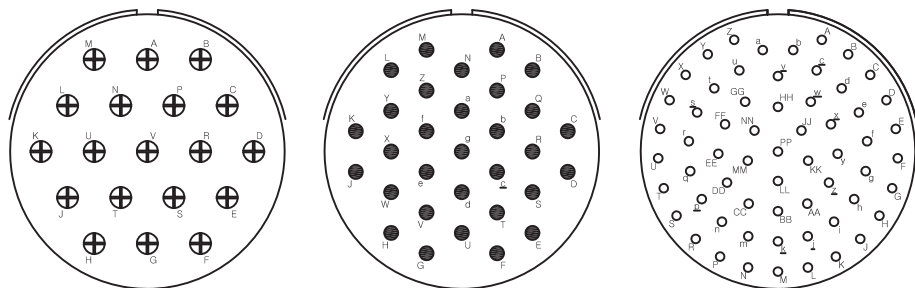


Insert number	22-32	22-34	22-41
No. of contacts	32	34	41
Contact size	20	20	27-20, 14-16
Service rating	I	I	I



Insert number	22-55	22-95	22-96
No. of contacts	55	32	7
Contact size	20	26-20, 6-12	20
Service rating	I	I	I

Shell Size 24

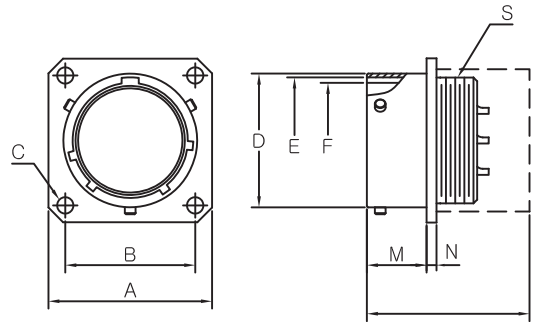


Insert number	24-19	24-31	24-61
No. of contacts	19	31	61
Contact size	12	16	20
Service rating	I	I	I

MIL-DTL-26482 Series I

Connector Dimensions

KD3110 Class A, E, F, J & P
MS3110 Class A, E, F, J & P
Wall Mounting Receptacle

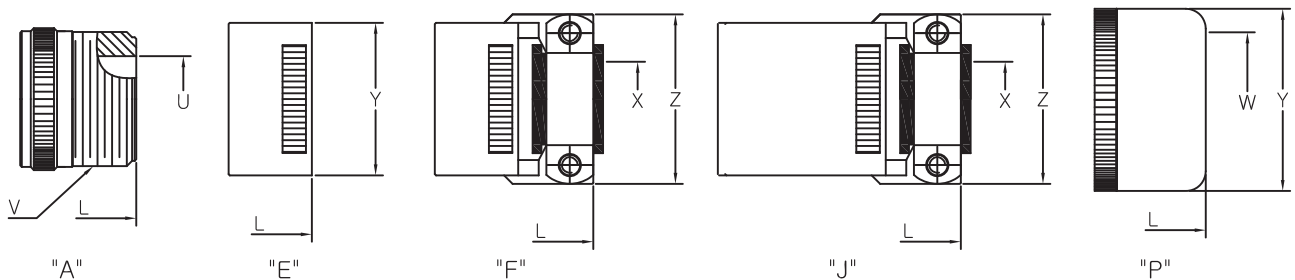


Termination Assembly

Shell size	□A max	□B ±0.13	∅C ±0.13	∅D +0.03 -0.13	∅E +0.13 -0.15	∅F +0.13 -0.03	M +0.79	N ±0.41	S THD-2A
8	21.03	15.09	3.05	12.01	10.46	9.19	10.95	1.57	7/16-28UNEF
10	24.23	18.26	3.05	14.99	13.72	12.45	10.95	1.57	9/16-24UNEF
12	26.59	20.62	3.05	19.05	17.50	15.42	10.95	1.57	11/16-24UNEF
14	28.98	23.01	3.05	22.22	20.68	18.59	10.95	1.57	13/16-20UNEF
16	31.34	24.61	3.05	25.40	23.85	21.77	10.95	1.57	15/16-20UNEF
18	33.73	26.97	3.05	28.58	26.39	24.43	10.95	1.57	1 1/16-18UNEF
20	36.91	29.36	3.05	31.75	29.57	27.61	14.12	2.39	1 3/16-18UNEF
22	40.08	31.75	3.05	34.92	32.74	30.78	14.12	2.39	1 5/16-18UNEF
24	43.18	34.93	3.73	38.10	35.92	33.96	14.96	2.39	1 7/16-18UNEF

Termination Assembly

3110 Class A, E, F, J & P

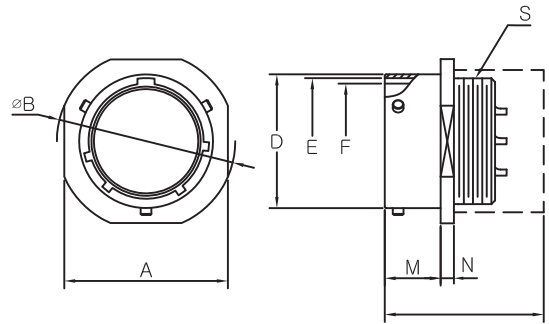


Class	E, F, J, P			A			E	F	J	P	
	X ±0.25	Y max	Z max	L max	U min	V THD-2A	L max	L max	L max	L max	W min
8	3.18	15.44	21.03	36.11	7.54	1/2-28 UNEF	33.73	48.82	57.68	36.91	8.05
10	4.78	18.64	22.63	36.11	10.69	5/8-24 UNEF	33.73	48.82	57.68	36.91	11.02
12	7.92	21.79	25.81	36.11	13.87	3/4-20 UNEF	33.73	48.82	61.24	36.91	13.92
14	9.53	24.99	28.98	36.11	16.84	7/8-20 UNEF	33.73	48.82	66.01	36.91	17.09
16	12.70	28.19	30.56	36.11	19.99	1 -20 UNEF	33.73	51.99	74.75	36.91	20.27
18	15.88	31.34	37.31	36.11	22.33	1 3/16-18 UNEF	33.73	52.78	80.57	36.91	22.83
20	15.88	34.54	37.31	43.26	25.76	1 3/16-18 UNEF	38.89	59.54	91.69	42.47	26.01
22	19.05	37.69	42.06	44.83	28.83	1 7/16-18 UNEF	38.89	59.54	95.66	42.47	29.18
24	20.32	40.89	44.45	44.83	31.98	1 7/16-18 UNEF	40.49	61.11	101.22	44.04	32.36

MIL-DTL-26482 Series I

Connector Dimensions

KD3111 Class A, E, F, J & P
MS3111 Class A, E, F, J & P
Cable Connecting Plug

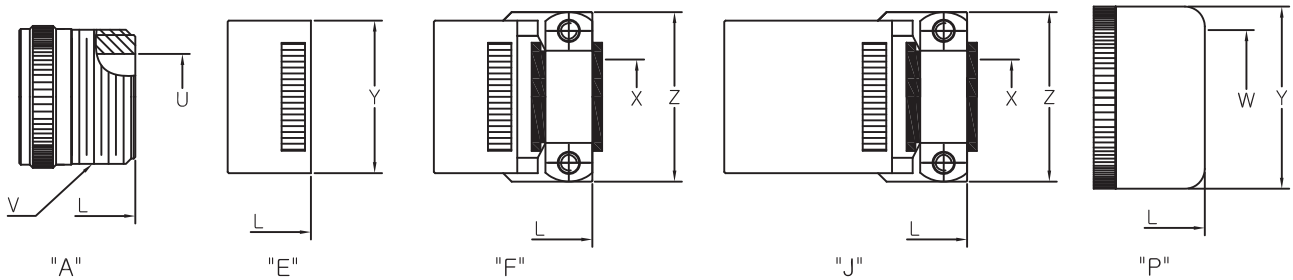


Termination Assembly

Shell size	□A max	∅B ±0.51	∅D +0.03 -0.13	∅E +0.13 -0.15	∅F +0.13 -0.03	M +0.79	N ±0.41	S THD-2A
8	21.03	23.83	12.01	10.46	9.19	10.16	2.39	7/16-28UNEF
10	24.23	26.97	14.99	13.72	12.45	10.16	2.39	9/16-24UNEF
12	26.59	29.36	19.05	17.50	15.42	10.16	2.39	11/16-24UNEF
14	28.98	31.75	22.22	20.68	18.59	10.16	2.39	13/16-20UNEF
16	31.34	34.14	25.40	23.85	21.77	10.16	2.39	15/16-20UNEF
18	33.73	36.53	28.58	26.39	24.43	10.16	2.39	1 1/16-18UNEF
20	36.91	39.67	31.75	29.57	27.61	13.59	2.92	1 3/16-18UNEF
22	40.08	42.88	34.92	32.74	30.78	13.59	2.92	1 5/16-18UNEF
24	43.18	46.02	38.10	35.92	33.96	14.17	2.92	1 7/16-18UNEF

Termination Assembly

3111 Class A, E, F, J & P

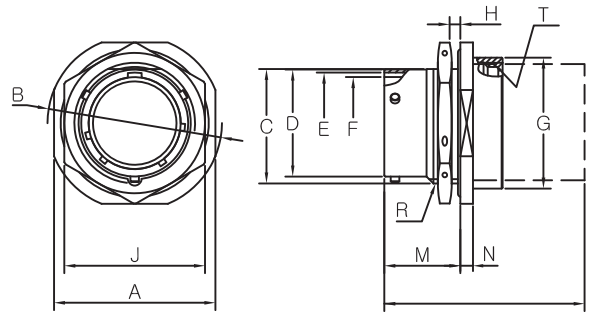


Class	E, F, J, P			A			E	F	J	P	
	X ±0.25	Y max	Z max	L max	U min	V THD-2A	L max	L max	L max	L max	W min
8	3.18	15.44	21.03	36.11	7.54	1/2-28 UNEF	33.73	48.82	57.68	36.91	8.05
10	4.78	18.64	22.63	36.11	10.69	5/8-24 UNEF	33.73	48.82	57.68	36.91	11.02
12	7.92	21.79	25.81	36.11	13.87	3/4-20 UNEF	33.73	48.82	61.24	36.91	13.92
14	9.53	24.99	28.98	36.11	16.84	7/8-20 UNEF	33.73	48.82	66.01	36.91	17.09
16	12.70	28.19	30.56	36.11	19.99	1 -20 UNEF	33.73	51.99	74.75	36.91	20.27
18	15.88	31.34	37.31	36.11	22.33	1 3/16-18 UNEF	33.73	52.78	80.57	36.91	22.83
20	15.88	34.54	37.31	43.26	25.76	1 3/16-18 UNEF	38.89	59.54	91.69	42.47	26.01
22	19.05	37.69	42.06	44.83	28.83	1 7/16-18 UNEF	38.89	59.54	95.66	42.47	29.18
24	20.32	40.89	44.45	44.83	31.98	1 7/16-18 UNEF	40.49	61.11	101.22	44.04	32.36

MIL-DTL-26482 Series I

Connector Dimensions

KD3114 Class E, F
MS3114 Class E, F
Jam Nut Receptacle

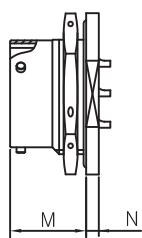


Termination Assembly

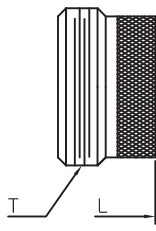
Shell size	□A	∅B	C	∅D	∅E	∅F	∅G	H		J	M	N	R	T
	max	-0.81	-0.25	+0.03 -0.13	+0.13 -0.15	+0.13 -0.03	max	min	max	±0.43	+0.79	±0.51	THD-2A	THD-2B
8	24.23	27.38	13.46	12.01	10.46	9.19	19.05	1.57	3.18	19.05	17.55	2.97	9/16-24UNEF	5/8-24UNEF
10	27.38	30.56	16.64	14.99	13.72	12.45	22.23	1.57	3.18	22.23	17.55	2.97	11/16-24UNEF	3/4-20UNEF
12	32.16	35.33	20.78	19.05	17.50	15.42	25.40	1.57	3.18	26.97	17.55	2.97	7/8-20UNEF	7/8-20UNEF
14	35.33	38.51	23.93	22.22	20.68	18.59	28.58	1.57	3.18	30.18	17.55	2.97	1 -20UNEF	1 -20UNEF
16	38.51	41.68	27.08	25.40	23.85	21.77	31.75	1.57	3.18	33.32	17.55	2.97	1 1/8-18UNEF	1 1/8-18UNEF
18	41.68	44.86	30.25	28.58	26.39	24.43	34.93	1.57	3.18	36.53	17.55	2.97	1 1/4-18UNEF	1 1/4-18UNEF
20	46.43	49.63	33.43	31.75	29.57	27.61	38.89	1.57	6.35	39.67	22.33	3.76	1 3/8-18UNEF	1 3/8-18UNEF
22	49.63	52.78	36.60	34.92	32.74	30.78	42.06	1.57	6.35	42.88	22.33	3.76	1 1/2-18UNEF	1 1/2-18UNEF
24	52.78	55.96	39.78	38.10	35.92	33.96	45.24	1.57	6.35	46.02	23.16	3.76	1 5/8-18UNEF	1 5/8-18UNEF

Termination Assembly

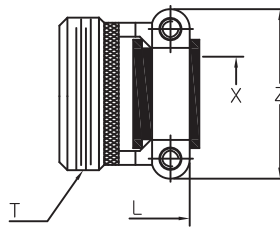
3114 Class A, E, F & P



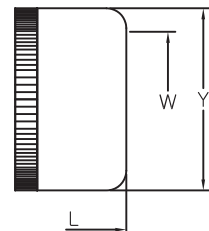
"A"



"E"



"F"



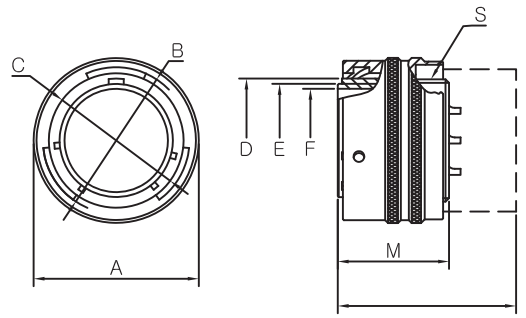
"P"

Class	A		F, P			E, F	E	F	P	
	M	N	X	Y	Z	T	L	L	L	W
Shell size	+0.79	±0.51	±0.25	max	max	THD-2B	max	max	max	min
8	17.55	2.97	3.18	15.44	21.03	5/8-24UNEF	34.14	48.41	35.33	8.05
10	17.55	2.97	4.78	18.64	22.63	3/4-20UNEF	34.14	48.41	35.33	11.02
12	17.55	2.97	7.92	21.79	25.81	7/8-20UNEF	34.14	48.41	35.33	13.92
14	17.55	2.97	9.53	24.99	28.98	1 -20UNEF	34.14	48.41	35.33	17.09
16	17.55	2.97	12.70	28.19	30.56	1 1/8-18UNEF	34.14	51.99	35.33	20.27
18	17.55	2.97	15.88	31.34	37.31	1 1/4-18UNEF	34.14	52.78	35.33	22.83
20	22.33	3.76	15.88	34.54	37.31	1 3/8-18UNEF	40.49	59.13	41.68	26.01
22	22.33	3.76	19.05	37.69	42.06	1 1/2-18UNEF	40.49	59.13	41.68	29.18
24	23.16	3.76	20.32	40.89	44.45	1 5/8-18UNEF	41.68	62.31	43.26	32.36

MIL-DTL-26482 Series I

Connector Dimensions

KD3116 Class A, E, F, J & P
MS3116 Class A, E, F, J & P
Straight Plug

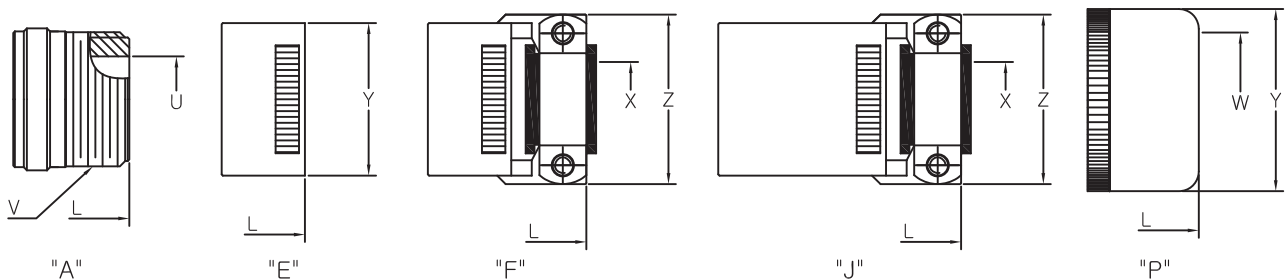


Termination Assembly

Shell size	∅A max	∅B +0.13 -0.15	∅C +0.13 -0.03	∅D +0.13 -0.15	∅E +0.03 -0.13	∅F min	M ±0.13	S THD-2A
8	19.86	14.63	12.22	10.11	9.07	7.42	21.10	7/16-28UNEF
10	23.52	17.70	15.29	13.36	12.32	10.39	21.10	9/16-24UNEF
12	26.49	22.12	19.33	17.14	15.17	13.28	21.10	11/16-24UNEF
14	30.05	25.27	22.48	20.32	18.34	16.46	21.10	13/16-20UNEF
16	33.15	28.45	25.65	23.49	21.52	19.61	21.10	15/16-20UNEF
18	35.33	31.62	28.85	26.03	24.06	21.89	21.10	1 1/16-18UNEF
20	38.89	34.80	32.00	29.21	27.23	25.07	24.90	1 3/16-18UNEF
22	42.06	37.97	35.18	32.38	30.41	28.22	24.90	1 5/16-18UNEF
24	45.13	41.25	38.35	35.56	33.58	31.42	26.40	1 7/16-18UNEF

Termination Assembly

3116 Class A, E, F, J & P

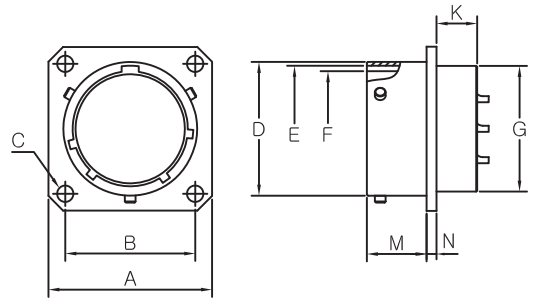


Class	E, F, J, P			A			E	F	J	P	
	X ±0.25	Y max	Z max	L max	U min	V THD-2A	L min	L max	L max	L max	W min
8	3.18	15.44	21.03	36.68	7.54	1/2-28 UNEF	33.73	48.41	57.68	38.10	8.05
10	4.78	18.64	22.63	36.68	10.69	5/8-24 UNEF	33.73	48.41	57.68	38.10	11.02
12	7.92	21.79	25.81	36.68	13.87	3/4-20 UNEF	33.73	48.41	61.24	38.10	13.92
14	9.53	24.99	28.98	36.68	16.84	7/8-20 UNEF	33.73	48.41	66.01	38.10	17.09
16	12.70	28.19	30.56	36.68	19.99	1 -20 UNEF	33.73	51.99	74.75	38.10	20.27
18	15.88	31.34	37.31	36.68	22.33	1 3/16-18 UNEF	33.73	55.32	80.57	38.10	22.83
20	15.88	34.54	37.31	43.89	25.76	1 3/16-18 UNEF	36.91	57.15	91.69	40.87	26.01
22	19.05	37.69	42.06	43.89	28.83	1 7/16-18 UNEF	36.91	57.15	95.66	40.87	29.18
24	20.32	40.89	44.45	44.15	31.98	1 7/16-18 UNEF	38.35	58.72	101.22	42.85	32.36

MIL-DTL-26482 Series I

Connector Dimensions

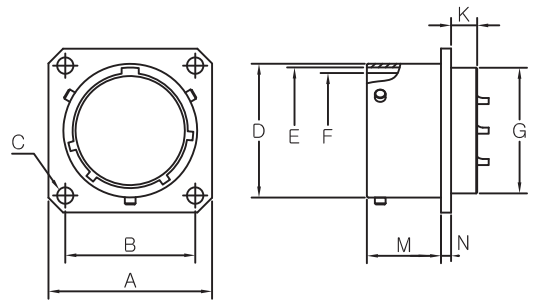
KD3112 Class E
MS3112 Class E
Box Mounting Receptacle



Shell size	□A	□B	∅C	∅D	∅E	∅F	∅G	K	M	N
	max	±0.13	±0.13	+0.03 -0.13	+0.13 -0.15	+0.13 -0.03	+0.79 -0.41	max	+0.79	±0.41
8	21.03	15.09	3.05	12.01	10.46	9.19	11.12	8.99	10.95	1.57
10	24.23	18.26	3.05	14.99	13.72	12.45	14.27	8.99	10.95	1.57
12	26.59	20.62	3.05	19.05	17.50	15.42	17.48	8.99	10.95	1.57
14	28.98	23.01	3.05	22.22	20.68	18.59	20.62	8.99	10.95	1.57
16	31.34	24.61	3.05	25.40	23.85	21.77	23.83	8.99	10.95	1.57
18	33.73	26.97	3.05	28.58	26.39	24.43	26.97	8.99	10.95	1.57
20	36.91	29.36	3.05	31.75	29.57	27.61	30.18	10.59	14.12	2.39
22	40.08	31.75	3.05	34.92	32.74	30.78	33.32	10.59	14.12	2.39
24	43.26	34.93	3.73	38.10	35.92	33.96	36.53	11.30	14.96	2.39

Connector Dimensions

KD3112 Class EP
Box Mounting Receptacle
of rear panel mounting

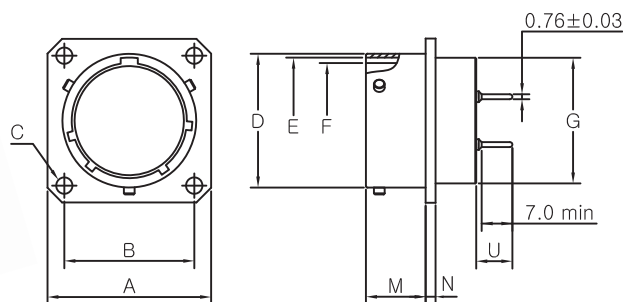


Shell size	□A	□B	∅C	∅D	∅E	∅F	∅G	K	M	N
	max	±0.13	±0.13	+0.03 -0.13	+0.13 -0.15	+0.13 -0.03	+0.79 -0.41	max	+0.79	±0.41
8	21.03	15.09	3.05	12.01	10.46	9.19	11.12	6.45	13.49	1.57
10	24.23	18.26	3.05	14.99	13.72	12.45	14.27	6.45	13.49	1.57
12	26.59	20.62	3.05	19.05	17.50	15.42	17.48	6.45	13.49	1.57
14	28.98	23.01	3.05	22.22	20.68	18.59	20.62	6.45	13.49	1.57
16	31.34	24.61	3.05	25.40	23.85	21.77	23.83	6.45	13.49	1.57
18	33.73	26.97	3.05	28.58	26.39	24.43	26.97	6.45	13.49	1.57
20	36.91	29.36	3.05	31.75	29.57	27.61	30.18	8.05	16.66	2.39
22	40.08	31.75	3.05	34.92	32.74	30.78	33.32	8.05	16.66	2.39
24	43.26	34.93	3.73	38.10	35.92	33.96	36.53	9.60	16.66	2.39

MIL-DTL-26482 Series I

Connector Dimensions

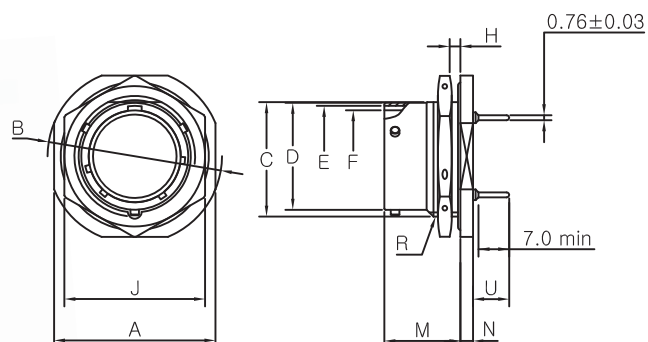
KD3112 Class PC
Box Mounting Receptacle
With PCB Contacts



Shell size	□A max	□B ±0.13	∅C ±0.13	∅D +0.03 -0.13	∅E +0.13 -0.15	∅F +0.13 -0.03	∅G +0.79 -0.41	M +0.79	N ±0.41	U ±0.5
8	21.03	15.09	3.05	12.01	10.46	9.19	11.12	10.95	1.57	9.5
10	24.23	18.26	3.05	14.99	13.72	12.45	14.27	10.95	1.57	9.5
12	26.59	20.62	3.05	19.05	17.50	15.42	17.48	10.95	1.57	9.5
14	28.98	23.01	3.05	22.22	20.68	18.59	20.62	10.95	1.57	9.5
16	31.34	24.61	3.05	25.40	23.85	21.77	23.83	10.95	1.57	9.5
18	33.73	26.97	3.05	28.58	26.39	24.43	26.97	10.95	1.57	9.5
20	36.91	29.36	3.05	31.75	29.57	27.61	30.18	14.12	2.39	8.5
22	40.08	31.75	3.05	34.92	32.74	30.78	33.32	14.12	2.39	8.5
24	43.26	34.93	3.73	38.10	35.92	33.96	36.53	14.96	2.39	8.0

Connector Dimensions

KD3114 PC
Jam Nut Receptacle
With PCB Contacts

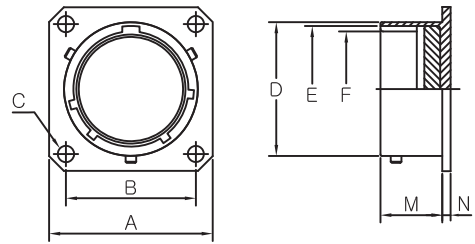


Shell size	□A max	∅B -0.81	C -0.25	∅D +0.03 -0.13	∅E +0.13 -0.15	∅F +0.13 -0.03	H		J ±0.43	M +0.79	N ±0.51	R THD-2A	U ±0.5
							min	max					
8	24.23	27.38	13.46	12.01	10.46	9.19	1.57	3.18	19.05	17.55	2.97	9/16-24UNEF	9.5
10	27.38	30.56	16.64	14.99	13.72	12.45	1.57	3.18	22.23	17.55	2.97	11/16-24UNEF	9.5
12	32.16	35.33	20.78	19.05	17.50	15.42	1.57	3.18	26.97	17.55	2.97	7/8-20UNEF	9.5
14	35.33	38.51	23.93	22.22	20.68	18.59	1.57	3.18	30.18	17.55	2.97	1 -20UNEF	9.5
16	38.51	41.68	27.08	25.40	23.85	21.77	1.57	3.18	33.32	17.55	2.97	1 1/8-18UNEF	9.5
18	41.68	44.86	30.25	28.58	26.39	24.43	1.57	3.18	36.53	17.55	2.97	1 1/4-18UNEF	9.5
20	46.43	49.63	33.43	31.75	29.57	27.61	1.57	6.35	39.67	22.33	3.76	1 3/8-18UNEF	8.5
22	49.63	52.78	36.60	34.92	32.74	30.78	1.57	6.35	42.88	22.33	3.76	1 1/2-18UNEF	8.5
24	52.78	55.96	39.78	38.10	35.92	33.96	1.57	6.35	46.02	23.16	3.76	1 5/8-18UNEF	8.0

MIL-DTL-26482 Series I

Connector Dimensions

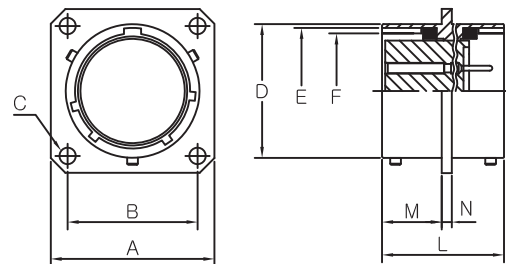
KD3115
MS3115
Dummy Stowage Receptacles



Shell size	□A max	□B ±0.13	∅C ±0.13	∅D +0.03 -0.13	∅E +0.13 -0.15	∅F +0.13 -0.03	M +0.79	N ±0.41
8	21.03	15.09	3.05	12.01	10.46	9.19	11.73	1.57
10	24.23	18.26	3.05	14.99	13.72	12.45	11.73	1.57
12	26.59	20.62	3.05	19.05	17.50	15.42	11.73	1.57
14	28.98	23.01	3.05	22.22	20.68	18.59	11.73	1.57
16	31.34	24.61	3.05	25.40	23.85	21.77	11.73	1.57
18	33.73	26.97	3.05	28.58	26.39	24.43	11.73	1.57
20	36.91	29.36	3.05	31.75	29.57	27.61	14.12	2.39
22	40.08	31.75	3.05	34.92	32.74	30.78	14.12	2.39
24	43.26	34.93	3.73	38.10	35.92	33.96	14.96	2.39

Connector Dimensions

KD3119 Class E
MS3119 Class E
Thru-Bulkhead Receptacle

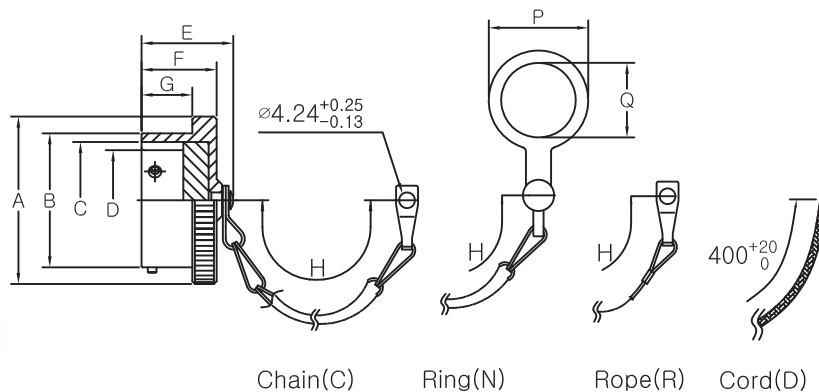


Shell size	□A max	□B ±0.13	∅C ±0.13	∅D +0.03 -0.13	∅E +0.13 -0.15	∅F +0.13 -0.03	L max	M +0.79	N ±0.41
8	21.03	15.09	3.05	12.01	10.46	9.19	28.58	14.27	1.57
10	24.23	18.26	3.05	14.99	13.72	12.45	28.58	14.27	1.57
12	26.59	20.62	3.05	19.05	17.50	15.42	28.58	14.27	1.57
14	28.98	23.01	3.05	22.22	20.68	18.59	28.58	14.27	1.57
16	31.34	24.61	3.05	25.40	23.85	21.77	28.58	14.27	1.57
18	33.73	26.97	3.05	28.58	26.39	24.43	28.58	14.27	1.57
20	36.91	29.36	3.05	31.75	29.57	27.61	35.71	17.48	2.39
22	40.08	31.75	3.05	34.92	32.74	30.78	35.71	17.48	2.39
24	43.26	34.93	3.73	38.10	35.92	33.96	35.71	17.48	2.39

MIL-DTL-26482 Series I

Accessories

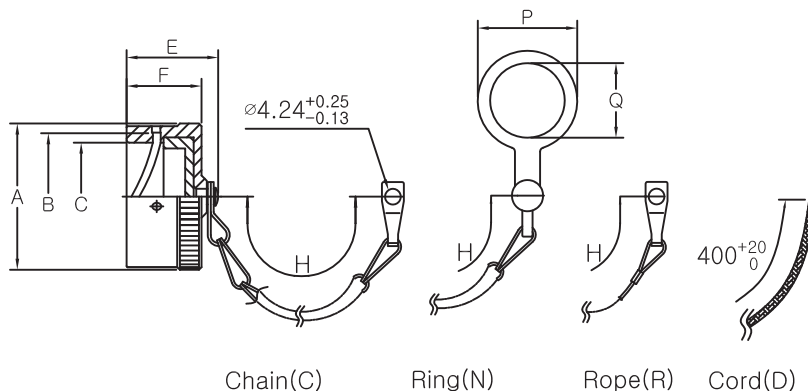
KD3180
MS3180
Cover Protecting caps for Plug



Chain(C) Ring(N) Rope(R) Cord(D)

KD order No.				Shell size	$\varnothing A$	$\varnothing B$	$\varnothing C$	$\varnothing D$	E	F	G	H	$\varnothing P$	$\varnothing Q$
Chain	Rope	Ring	Nylon Cord		max	+0.03 -0.13	+0.13 -0.15	+0.13 -0.03	max	max	+0.25	+12.70 - 6.35	max	min
KD3180-8C	-8R	-8N	-8D	8	18.26	12.01	10.46	9.19	19.84	14.27	9.35	76.20	20.62	14.68
KD3180-10C	-10R	-10N	-10D	10	21.44	14.99	13.72	12.45	19.84	14.27	9.35	76.20	25.40	17.86
KD3180-12C	-12R	-12N	-12D	12	25.40	19.05	17.50	15.42	19.84	14.27	9.35	88.90	30.18	22.63
KD3180-14C	-14R	-14N	-14D	14	28.58	22.22	20.68	18.59	19.84	14.27	9.35	88.90	36.53	25.81
KD3180-16C	-16R	-16N	-16D	16	31.75	25.40	23.85	21.77	19.84	14.27	9.35	88.90	39.67	28.98
KD3180-18C	-18R	-18N	-18D	18	34.92	28.58	26.39	24.43	19.84	14.27	9.35	88.90	42.88	32.16
KD3180-20C	-20R	-20N	-20D	20	38.10	31.75	29.57	27.61	21.44	15.88	10.92	101.60	46.02	35.33
KD3180-22C	-22R	-22N	-22D	22	41.28	34.92	32.74	30.78	21.44	15.88	10.92	101.60	49.23	38.51
KD3180-24C	-24R	-24N	-24D	24	44.45	38.10	35.92	33.96	22.22	16.71	11.76	101.60	52.37	41.68

KD3181
MS3181
Cover Protecting caps for Receptacles



Chain(C) Ring(N) Rope(R) Cord(D)

KD order No.				Shell size	$\varnothing A$	$\varnothing B$	$\varnothing C$	E	F	H	$\varnothing P$	$\varnothing Q$
Chain	Rope	Ring	Nylon Cord		max	+0.13 -0.15	+0.13 -0.03	max	max	+12.70 - 6.35	max	min
KD3181-8C	-8R	-8N	-8D	8	18.64	14.63	12.22	21.44	14.27	76.20	20.62	14.68
KD3181-10C	-10R	-10N	-10D	10	21.82	17.70	15.29	21.44	14.27	76.20	25.40	17.86
KD3181-12C	-12R	-12N	-12D	12	25.40	22.12	19.33	21.44	14.27	88.90	30.18	22.63
KD3181-14C	-14R	-14N	-14D	14	28.58	25.27	22.48	21.44	14.27	88.90	36.53	25.81
KD3181-16C	-16R	-16N	-16D	16	31.75	28.45	25.65	21.44	14.27	88.90	39.67	28.98
KD3181-18C	-18R	-18N	-18D	18	34.92	31.62	28.85	21.44	14.27	88.90	42.88	32.16
KD3181-20C	-20R	-20N	-20D	20	38.10	34.80	32.00	21.44	14.27	101.60	46.02	35.33
KD3181-22C	-22R	-22N	-22D	22	41.28	37.97	35.18	21.44	14.27	101.60	49.23	38.51
KD3181-24C	-24R	-24N	-24D	24	44.45	41.25	38.35	22.22	15.29	101.60	52.37	41.68

MIL-DTL-26482 Series I

Cross Reference Lists

KUKDONG	MILITARY	AMPHENOL / BENDIX	S.E.C / ARRAY	FCI / BURNDY	FCI / SOURIAU	ITT CANNON	SPACECRAFT	VEAM	WPI / GENERAL
KD3110A	MS3110A	PT00A	PW00A	BT00A	851-00A*50	KPT00A	SCPT3100A	VPT00A	-
KD3110E	MS3110E	PT00E	PW00E	BT00E	851-00E*50	KPT00E	SCPT3100E	VPT00E	GC00E
KD3110F	MS3110F	PT00F(SR)	PW00F	BT00EC	851-00EC*50	KPT00F	SCPT3100F	VPT00E(SR)	GC00F
KD3110J	MS3110J	-	PW00JF	BT00JF	851-00JC*50	KPT00J	SCPT3100J	VPT00W	-
KD3110P	MS3110P	PT00P	PW00P	BT00P	851-00P*50	KPT00P	SCPT3100P	VPT00P	GC00P
KD3111A	MS3111A	PT01A	PW01A	BT01A	851-01A*50	KPT01A	SCPT3111A	VPT01A	-
KD3111E	MS3111E	PT01E	PW01E	BT01E	851-01E*50	KPT01E	SCPT3111E	VPT01E	GC01E
KD3111F	MS3111F	PT01E(SR)	PW01F	BT01EC	851-01EC*50	KPT01F	SCPT3111F	VPT01E(SR)	GC01F
KD3111J	MS3111J	-	PW01JF	BT01JF	851-01JC*50	KPT01J	SCPT3111J	VPT01W	GC01J
KD3111P	MS3111P	PT01P	PW01P	BT01P	851-01P*50	KPT01P	SCPT3111P	VPT01P	GC01P
KD3112A	MS3112A	PT02A	PW02A	BT02A	851-02A*50	KPT02A	SCPT3112A	VPT02A	-
KD3112E	MS3112E	PT02E	PW02E	BT02E	851-02E*50	KPT02E	SCPT3112E	VPT02E	GC02E
KD3112EP	-	-	-	-	-	-	-	-	-
KD3112PC	-	-	-	-	-	-	-	-	-
KD3114A	-	-	-	-	851-07A*50	-	-	-	-
KD3114E	MS3114E	PT07E	PW07E	BT07E	851-07E*50	KPT07E	SCPT3114E	VPT07E	GC07E
KD3114F	MS3114F	PT07E(SR)	PW07F	BT07EC	851-07EC*50	KPT07F	SCPT3114F	VPT07E(SR)	-
KD3114P	MS3114P	PT07P	PW07P	BT07P	851-07P*50	KPT07P	SCPT3114P	VPT07P	-
KD3114PC	-	-	-	-	-	-	-	-	-
KD3116A	MS3116A	PT06A	PW06A	BT06A	851-06A*50	KPT06A	SCPT3116A	VPT06A	-
KD3116E	MS3116E	PT06E	PW06E	BT06E	851-06E*50	KPT06E	SCPT3116E	VPT06E	GC06E
KD3116F	MS3116F	PT06E(SR)	PW06F	BT06EC	851-06EC*50	KPT06F	SCPT3116F	VPT06E(SR)	GC06F
KD3116J	MS3116J	-	PW06J	BT06JF	851-06JC*50	KPT06J	SCPT3116J	VPT06W	GC06J
KD3116P	MS3116P	PT06P	PW06P	BT06P	851-06P*50	KPT06P	SCPT3116P	VPT06P	GC06P
KD3119E	MS3119E	PTB	-	-	-	KPTB	-	VPTB	-